

RAB7B Antibody (C-term)
Affinity Purified Rabbit Polyclonal Antibody (Pab)
Catalog # AP19936B

Specification

RAB7B Antibody (C-term) - Product Information

Application	WB,E
Primary Accession	Q96AH8
Other Accession	NP_796377.3
Reactivity	Human
Host	Rabbit
Clonality	Polyclonal
Isotype	Rabbit IgG
Calculated MW	22511
Antigen Region	168-197

RAB7B Antibody (C-term) - Additional Information

Gene ID 338382

Other Names

Ras-related protein Rab-7b, RAB7B

Target/Specificity

This RAB7B antibody is generated from rabbits immunized with a KLH conjugated synthetic peptide between 168-197 amino acids from the C-terminal region of human RAB7B.

Dilution

WB~~1:1000

E~~Use at an assay dependent concentration.

Format

Purified polyclonal antibody supplied in PBS with 0.09% (W/V) sodium azide. This antibody is purified through a protein A column, followed by peptide affinity purification.

Storage

Maintain refrigerated at 2-8°C for up to 2 weeks. For long term storage store at -20°C in small aliquots to prevent freeze-thaw cycles.

Precautions

RAB7B Antibody (C-term) is for research use only and not for use in diagnostic or therapeutic procedures.

RAB7B Antibody (C-term) - Protein Information

Name RAB7B

Function Controls vesicular trafficking from endosomes to the trans- Golgi network (TGN). Acts as

a negative regulator of TLR9 signaling and can suppress TLR9-triggered TNFA, IL6, and IFNB production in macrophages by promoting TLR9 lysosomal degradation. Also negatively regulates TLR4 signaling in macrophages by promoting lysosomal degradation of TLR4. Promotes megakaryocytic differentiation by increasing NF-kappa-B-dependent IL6 production and subsequently enhancing the association of STAT3 with GATA1. Not involved in the regulation of the EGF- and EGFR degradation pathway.

Cellular Location

Late endosome. Lysosome Golgi apparatus. Golgi apparatus, trans- Golgi network. Cytoplasmic vesicle, phagosome. Cytoplasmic vesicle, phagosome membrane; Lipid-anchor; Cytoplasmic side. Note=Recruited to phagosomes containing S.aureus or M.tuberculosis.

Tissue Location

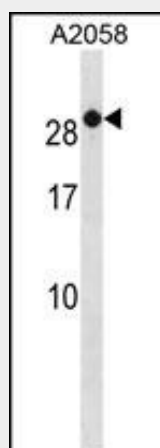
Expressed in heart, placenta, lung, skeletal muscle and peripheral blood leukocyte.

RAB7B Antibody (C-term) - Protocols

Provided below are standard protocols that you may find useful for product applications.

- [Western Blot](#)
- [Blocking Peptides](#)
- [Dot Blot](#)
- [Immunohistochemistry](#)
- [Immunofluorescence](#)
- [Immunoprecipitation](#)
- [Flow Cytometry](#)
- [Cell Culture](#)

RAB7B Antibody (C-term) - Images



RAB7B Antibody (C-term) (Cat. #AP19936b) western blot analysis in A2058 cell line lysates (35ug/lane). This demonstrates the RAB7B antibody detected the RAB7B protein (arrow).

RAB7B Antibody (C-term) - Background

Protein transport. Probably involved in vesicular traffic (By similarity).

RAB7B Antibody (C-term) - References

Progida, C., et al. J. Cell. Sci. 123 (PT 9), 1480-1491 (2010) :

Yang, M., et al. Biochem. Biophys. Res. Commun. 318(3):792-799(2004)